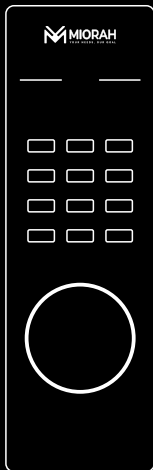




WWW.MIORAHSHOP.IN



## AINEXA DIGITAL SAFE LOCKER

— A5 PASSWORD MODEL —

### PRODUCT INTRODUCTION

Thank you for choosing Miorah Digital Safe Locker, engineered for premium home and office safety.

This electronic safe is available in multiple sizes and designs with password or fingerprint unlocking features.

### PACKAGE CONTENTS

- Miorah Safe Locker Unit (Model as per label)
- 2× Emergency Keys
- User Manual
- Expansion Screws for Mounting
- Battery Compartment (requires 4× AA batteries, not included)

### KIND TIPS

- Do not put the emergency key in the cabinet and keep it properly.
- Do not use batteries with energy-gathering rings, such as Nanfu, 555, and Duracell. These batteries have excessive current and may cause the panel to malfunction.
- The safe has a factory password. Please be sure to change the password after receiving the goods.

# A5 PASSWORD MODEL OPERATION GUIDE

## 1. First-Time Opening (Using Emergency Key)



### 1. Open Battery Compartment

Gently slide or lift the black battery cover located on the inside upper section of the door

### 2. Insert Batteries

Place 4× 4.8V alkaline batteries into the compartment, aligning them according to

**Important Tips:** Do not use rechargeable or high-drain batteries like Nanfu or Duracell. Replace all 4 batteries together. Avoid mixing old and new batteries. If the panel fails to power on, double-check battery orientation and contact points.



**Function:** The red button highlighted in the image is the reset/program button.

#### • To set password:

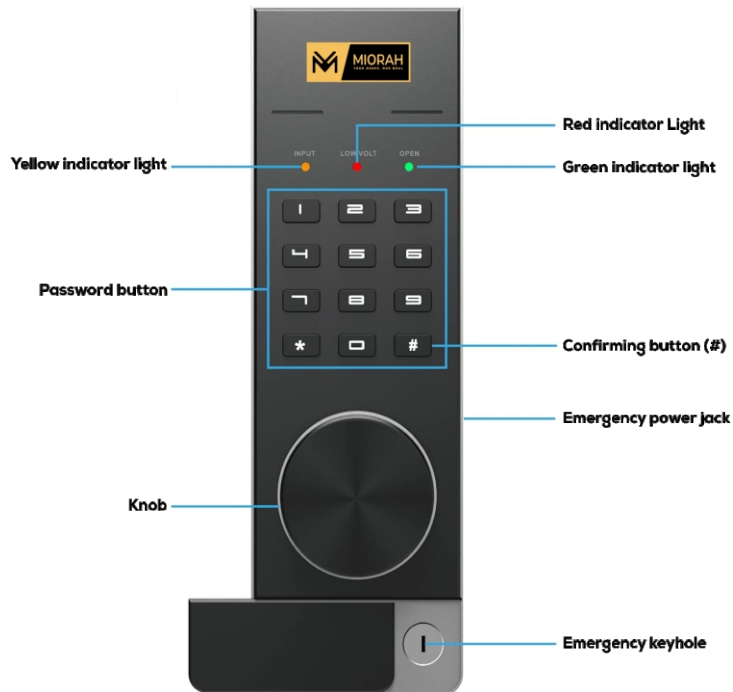
To set password – To enter management mode (PF models)

#### • To enter management mode (PF models):

Press reset → Input admin code 123456 → Press # → Access menu for fingerprint setup, admin settings, etc.

**NOTE:** Always keep the door open while configuring. Do not close until the password or fingerprint has

## UNDERSTANDING THE DIGITAL LOCK PANEL



## 2. Setting the Password

### STEP 1) OPEN THE SAFE BOX FOR THE FIRST TIME :

Press the right edge of the emergency keyhole cover, insert the emergency key, and turn it 90°counterclockwise, and turn the handle clockwise to open the door successfully for the first time.

### STEP 2) INSERT THE BATTERY :

Remove the internal battery box seal and install the 4 AA 1.5 Volt alkaline batteries, the system will power on (charge ring battery is not recommended as it may destroy safe box's internal electronic components)

### STEP 3) SET THE DIGITAL PASSWORD :

Note:1) this password lock can be set with two different independent passwords.

2. The initial password is 123456.

3. The password can be set from 1to 8 arabic numbers To set the password, press the setting button on the side of the cabinet, the buzzer 'di' will sound, enter your new password, and press '#', enter the same password again, and press '#' to confirm.

For the second password, press '#' and entre '00', and Press the setting button, the buzzer 'di di' will be sound twice, enter your second password and press'#', enter the same password again, and press '#' to confirm. indicating that the password has been set successfully.

**EMERGENCY OPENING :** When the safe box's battery power is too low to open the door, insert 4AA batteries to the emergency battery box, plug the emergency power cord into the emergency power jack on the bottom edge of the panel, then enter the correct password to open the door.

## 3. Vibration Alarm Mode

In standby state, press the \* or 9 button, all the lights are on at the same time, and then a beep of 'Di', the Vibration alarm mode is turned on. If the box is shaken or tilted, it will give an alarm immediately, at this point, enter the correct password and the alarm will be cancelled.

## 4. ERROR ALARM FUNCTION

After 3 consecutive time of wrong code, your safe will enter the alarm mode, the alarm will sound for one minute, then enter the correct password and the alarm will be cancelled.

## 5. The keypad is not turning on

Cause:

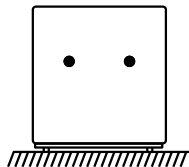
- Batteries may be dead or incorrectly installed
- Battery terminals may be dirty or corroded

Solution:

- Open the safe with the emergency key
- Remove and replace all 4 batteries with new AA 1.5V alkaline batteries
- Ensure proper polarity (+/-) is followed
- Clean terminals with a dry cloth if needed

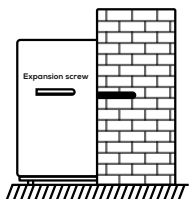
## INSTALLATION REFERENCE DIAGRAM

1.



Place the safe in the desired installation location. From inside the safe, align and mark the positions of the mounting holes. Then move the safe aside and drill two holes in the marked positions.

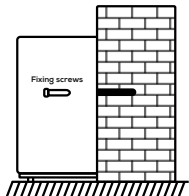
2.



Insert expansion bolts into the holes.

Partially extract the screws from the expansion sleeves.

3.



Return the safe to its original position.

From inside the safe, use the screws to firmly secure the safe into the wall/floor.

SCAN THE QR CODE



MIORAH  
By

AINEXA



ccare.hss@gmail.com



+91 8160349035



www.miorahshop.in

FOLLOW US

