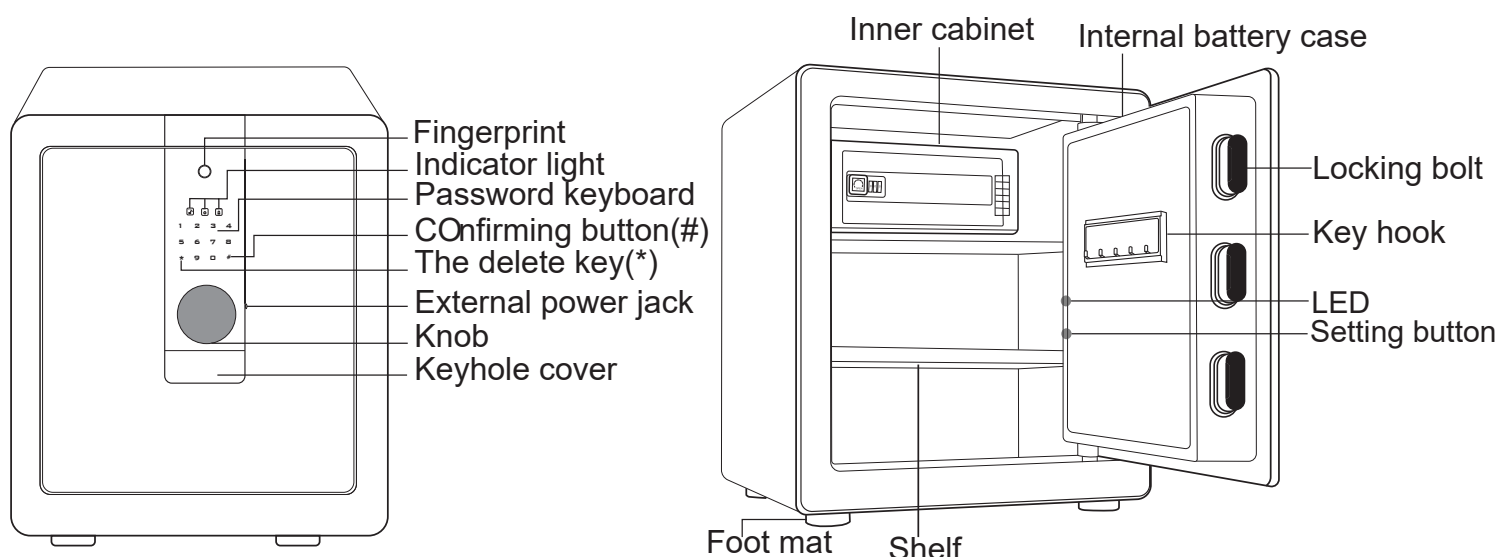
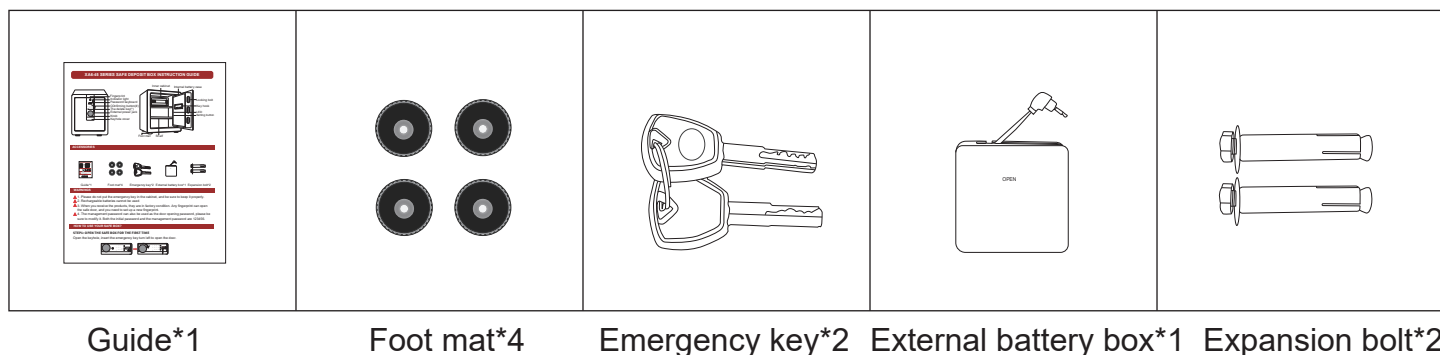


AINEXA DIGITAL SAFE LOCKER
— **A6 Password & Fingerprint Model** —

A6 PASSWORD & FINGERPRINT MODEL OPERATION GUIDE



ACCESSORIES



Guide*1

Foot mat*4

Emergency key*2

External battery box*1

Expansion bolt*2

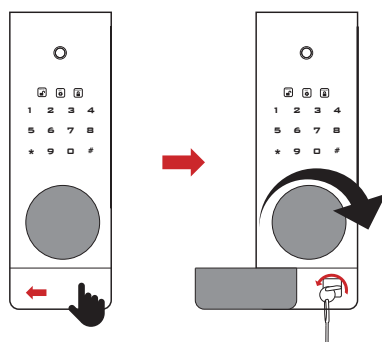
WARNINGS

- ⚠ 1. Please do not put the emergency key in the cabinet, and be sure to keep it properly.
- ⚠ 2. Rechargeable batteries cannot be used.
- ⚠ 3. When you receive the products, they are in factory condition. Any fingerprint can open the safe door, and you need to set up a new fingerprint.
- ⚠ 4. The management password can also be used as the door opening password, please be sure to modify it. Both the initial password and the management password are 123456.

HOW TO USE YOUR SAFE BOX?

STEP1: OPEN THE SAFE BOX FOR THE FIRST TIME

Open the keyhole, insert the emergency key turn left to open the door.



STEP2: SET PASSWORD

Press the red setting button, then enter the password of 1 ~ 8 digits, press the "#" and hear the "di","di", then enter the password again and press the "#". If the passwords entered twice are the same, and you hear a long "di --" sound, the new password is set successfully. If the passwords entered twice are different, you will hear the "di di di" sound.

STEP3: SET FINGERPRINT

Press the red setting button, then place your finger in the center on the fingerprint collector, when you hear the short sound of "di", take away the finger and press it again, repeat it for 5 times. When you hear the long sound of "di --", and the fingerprint registration is successful. (please register 2-3 times for each finger to facilitate fingerprint identification)

TIP: Press five times during registration, a maximum of 20 fingerprints can be registered)

HOW TO OPEN THE DOOR

Password to open the door:

press the # , then enter the correct password, and then press the # to open the door.

Fingerprint to open the door:

press the finger on the fingerprint collector and open the door after successful identification.

TIP:

When the wrong password or fingerprint is entered, the error light will be on and "didi" will sound at the same time. When you enter the wrong password or fingerprint for 5 times, the alarm will sound.

RESTORE FACTORY SETTINGS

Long press the red setting button for 2 ~ 3 seconds, long sound of "di, di --" . The user password is 123456 and the fingerprint is cleared.

VIBRATION ALARM

Press the "9", and all lights are on at the same time, a "di" will sound and the vibration alarm will be turned on. After you open the door, the vibration alarm will be turned off.

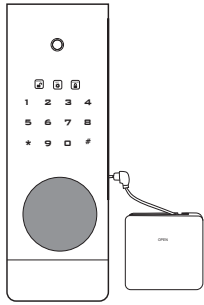
SILENCING FUNCTION

Press and hold the number "*" key (about 3 seconds), the correct light is on, and the silencing function is successful. Press and hold the "*" key again (about 3 seconds). The correct light is on and the sound is open.

UNDERVOLTAGE

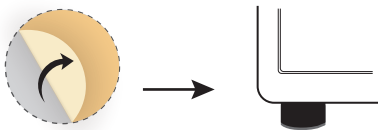
when the power supply voltage is insufficient, the system exits after using, you will hear five short sounds of "di di di". At this time, please replace the battery.

HOW TO USE EMERGENCY BATTERY BOX



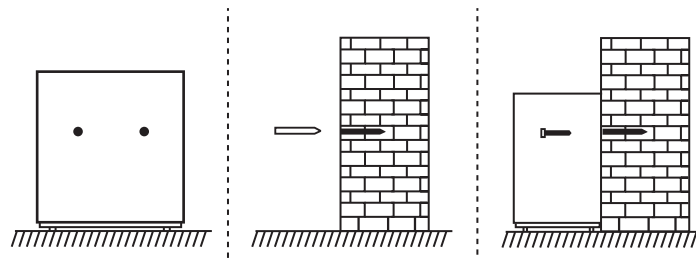
When the safe box's battery is too low to open the door, insert 4AA 1.5 batteries in the emergency battery box, plug the emergency power cord into the emergency power jack on the bottom edge of the panel, then enter the correct password to open the door.

How to install foot mat?



Remove the sticker of the foot mat and install it on the bottom of the safe.

How to mount the safe?



1. Place the safe on the installation location, find the installation holes from the inside of the safe, mark the drilling points from the inner installation holes, then remove the safe and drill two holes.
2. Take the expansion bolt out of the casing and put it into the drilled hole, then align the pre-drilled hole with the inner hole of the safe, and then insert the expansion bolt into the casing from the inside of the safe.

SCAN THIS QR CODE TO SEE
THE INSTALLATION VIDEO



M MIORAH
YOUR NEEDS. OUR GOAL

By

A AINEXA



ccare.hss@gmail.com



+91 8160349035



www.miorahshop.in

FOLLOW US

